

Industrial single-phase 5-step transformer speed controllers for voltage controllable motors, with high benefits and applicable for small engines and all kinds of domestic or industrial facilities.
The tapings from the transformer are direct connected to terminal blocks, so you can control the speed with a remote switch or thermostat.

Specifications

Supply voltage:	230Vac / 50Hz
Max intensity:	1.5A –20A according model
Control type:	Remote 5-step switch or thermostat
Regulation:	Start on min. or max.
Output:	5-step controlled (0-80-120-150-170-230V)
Protection:	Fuse 2.5A - 12A (type HF)
Connection:	Terminal Block
Enclosure:	Plastic RAL 7035, or metal, IP54

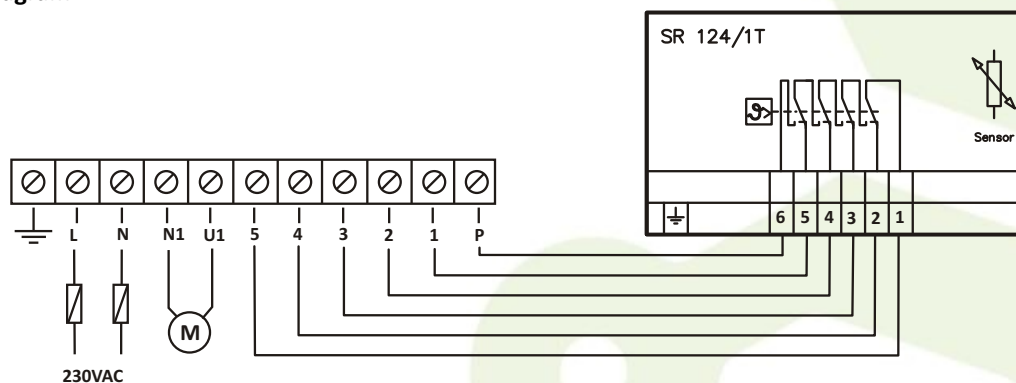
Advantages

Special for ventilation systems
High quality and low price. Easy installation.

CE Norms

These controllers comply with following mentioned European norms:
EMC 89/336/CEE modified by 92/31/CEE and low voltage norm 72/23/CEE
RoHS compliant

Wiring diagram



MODEL	CODE	INTENSITY	SURFACE MOUNTING IP54 DIMENSIONS (mm)
ATFB 230V 1,5A	125061	1,5A	122 x 187 x 90
ATFB 230V 2,2A	125062	2,2A	122 x 187 x 90
ATFB 230V 3,5A	125063	3,5A	170 x 255 x 140
ATFB 230V 5,0A	125064	5,0A	170 x 255 x 140
ATFB 230V 7,5A	125065	8,0A	200 x 305 x 180
ATFB 230V 10,0A	125066	10,0A	
ATFB 230V 13,0A	125067	13,0A	
ATFB 230V 16,0A	125068	16,0A	
ATFB 230V 20,0A	125069	20,0A	